

# THE GRAND OUTDOORS



- pg 4 **The Right Material**
- pg 6 **Start Your Project**
- pg 18 **Decking Collections**
- pg 34 **Selecting Rail**
- pg 40 **Other Things To Consider**



Slate Gray

**PLUS:**  
*Find Your Outdoor Living Style (pg 10)*



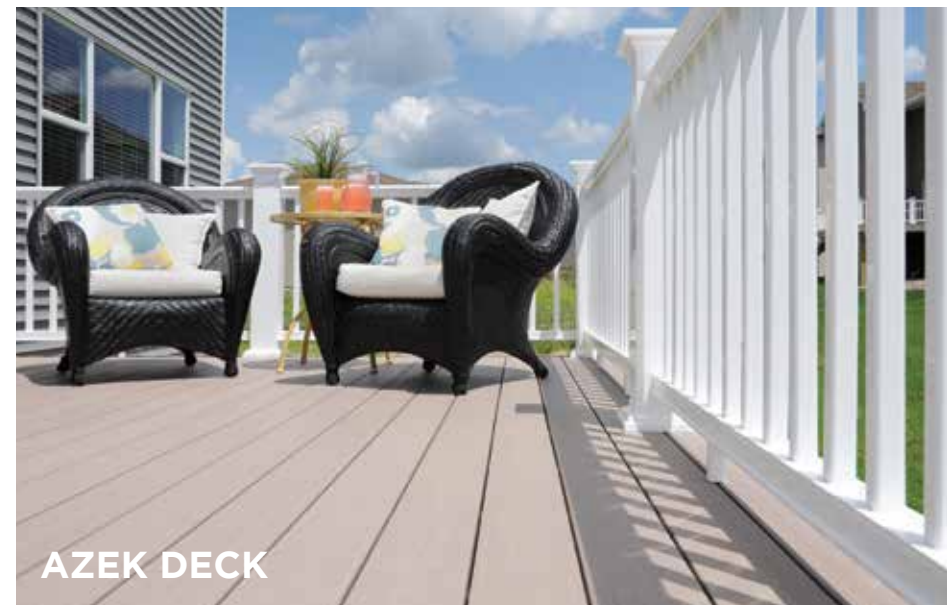
# CPG BUILDING PRODUCTS YOUR INDUSTRY LEADER

*As a homeowner, we know that you expect great quality in what you put on your home – a product that allows maximum enjoyment with low maintenance. At CPG Building Products, we take great pride in offering superior products that are created to do just that.*

*With over 25 years of experience in alternative building products, we have the expertise to deliver exceptional products for the exterior of your home and outdoor living spaces. With the combination of the AZEK and TimberTech brands, we provide an unparalleled portfolio of products including composite decking, capped composite decking, capped pvc decking, outdoor lighting, porch flooring, trim and moulding, pavers, and even product specific fastening solutions. To learn more about our AZEK line of products, visit [www.azek.com](http://www.azek.com), or to learn more about our TimberTech line of products, visit [www.timbertech.com](http://www.timbertech.com).*

*As consumer preferences have evolved over the last 20 years, we have developed innovative products to advance the category and meet the demand of the market. We listen to your needs and extensively research the best way for us to meet your needs. We take the time to develop products that will stand the test of time and provide the highest quality of living for our customers because you deserve it.*

*CPG Building Products is an industry leader in every product category we offer. You can feel confident that you are partnering with a company that has the expertise, knowledge, and innovative drive to bring you the best possible products to turn your home into a work of art – one that will be enjoyable and relaxing for years to come.*



**AZEK DECK**



**TIMBERTECH DECK**



**AZEK RAIL**



**AZEK TRIM & MOULDING**



**TIMBERTECH RAIL**



**AZEK PAVERS**



**AZEK PORCH**

# CHOOSING THE RIGHT MATERIAL

## Capped PVC (Like AZEK®)

Whether you are building a new deck, or replacing an old one, it is important to understand the differences in decking materials available and choose the one that works best for your outdoor space and lifestyle.

You'll love AZEK Capped PVC decking because it answers the desire for low maintenance decking, contains no wood fiber, and offers the broadest color assortment and natural wood grains available. AZEK Capped PVC is ranked #1 in quality and has a crisp, unparalleled aesthetic that can't be found in other decking materials. It is available in a variety of price points and can be considered across most budget ranges – especially factoring in the higher cost of ownership over 20 years that you find with other alternative materials. AZEK Capped PVC will not rot, crack, warp or splinter and does not require annual sanding, staining or sealing, giving you piece of mind, and more time to show off your outdoor masterpiece.

## Capped Composite (Like TimberTech®)

Capped composite decking takes performance to a whole new level by taking the core of traditional composite decking and adding a protective non-wood, polymer cap. Capped composites offer enhanced scratch, stain and fade resistant properties. One of the primary benefits of capped composites is the ability to produce a surface look that closely emulates real wood – from the warmth of tropical hardwoods to the look of hand-scraped indoor flooring. High end looks with superior performance in a variety of price points make capped composite decking a choice to be considered by all discerning homeowners.

## Composite (Like TimberTech)

Composite decking is a combination of plastic and wood fiber and is more resistant to the elements than traditional wood decking. With composite decking, there are no splinters and no stress about the annual painting, sealing or staining a wood deck requires. Composite decking also comes in a variety of colors, surface textures, and price points. For the value conscious buyer who wants a low maintenance deck, composites are a great, practical choice. They offer all the benefits of rot-, decay- and insect resistance while providing a low maintenance deck board.

## Wood

While the options may vary by market with significant variation in pricing, many wood options are available. Although the charm and allure of a wood deck still attracts many traditionalists; the appeal often fades as quickly as the wood does. With the frequent and necessary maintenance required of wood decking, homeowners begin to regret this choice shortly after their deck surface begins to crack, splinter, warp, or cup. It is important when making any decision about decking to consider the installation costs as well as the ongoing maintenance costs. With this in mind, wood can become an expensive and time consuming proposition in only a few short years.

# CATEGORY COMPARISON

AZEK Building Products have advanced the evolution of outdoor living surfaces as a leader in research, development, and manufacturing of long lasting, low maintenance, Capped PVC decking. Today's alternative deck planks fall into three distinct categories - traditional composite, capped composite and capped PVC decking.

	Pressure Treated & Other Soft Woods	Wood Plastic Composite	Capped Wood Plastic Composite	Capped PVC
Year of Debut	N/A	1995	2008	2009
Maintenance	Annual Staining & Sealing	Periodic Cleaning	Periodic Cleaning	Periodic Cleaning
Aesthetics	Must be Stained or Painted	Resembles Wood	Real Wood Look	Enhanced Real Wood Look
Residential Warranty	None	25-Year Against Material Defects, Termites and Rotting	25-Year Against Fade & Stain, Material Defects, Termites and Rotting	Limited Lifetime Against Material Defects, Termites and Rotting
Durability	★	★★★	★★★★★	★★★★★
Mold/Mildew Resistance	✗	★★	★★★★	★★★★★
Stain Resistance	★	★	★★★★★	★★★★★
Scratch Resistance	★	★	★★★	★★★★★
Colorfast	★	★	★★★★★	★★★★★
Splinter Free	✗	★★★★★	★★★★★	★★★★★
Heat Dissipation	★	★	★	★★★
Approximate Initial Upfront Cost	\$3.1K - \$3.9K	\$4.1K - \$4.7K	\$4.4K - \$5.3K	\$5.1K - \$5.7K
Approximate Cost of Ownership Over 20-Years*	\$16.5K - \$18.1K	\$11.1K - \$11.7K	\$9.5K - \$10.4K	\$9.9K - \$10.7K

\* Cost of Ownership is an estimate based on the average deck size of 320 sq. ft. and includes all materials and labor for annual cleaning/staining and pressure washing.

# THE ART OF CHOOSING COLOR

*Choosing the right color for your deck can sometimes feel overwhelming. You may be asking yourself: What are the newest trends in color? What will look best with my house and trim? How will the color I choose hold heat in the summer sun? AZEK Deck helps you answer these questions and offers the choices you need for the perfect outdoor space.*

## Color Trends

From Hazelwood™ to Kona®, the color you choose for your new deck can transform your space from just a deck to an outdoor oasis. Choose a color that closely matches your brick or stone, or one that contrasts nicely with the color of your siding and trim. To mix-and-match colors and design your dream space, visit: [AZEK.com/products/deck](http://AZEK.com/products/deck)

## Heat Buildup

While you wouldn't think of going barefoot on a wood deck, you won't be able to wait to kick off your shoes on an AZEK Deck. And, while AZEK Deck boards are cooler to the touch than many other deck boards in similar colors, all decking products will get hot in the sun causing them to feel warm on your feet. Generally, lighter colors have less heat buildup than darker colors and tend to feel cooler to the touch.

## Walk of Life...

Spending time outside is every deck owner's dream. And, when you're ready to relax, you want your deck to be ready, too. Choosing a deck color that matches your lifestyle is critical to making sure that happens. Consider a deck color that complements your family, pets, traffic patterns across the deck, and even your local geography. For instance, if your surrounding landscape is red clay, perhaps Mahogany or Cypress would be a great choice to hide the occasional footprint or paw prints.



01 Hazelwood™ 02 Brownstone 03 SandRidge  
 04 Slate Gray 05 RiverRock 06 Tahoe®  
 07 Harvest Bronze 08 Cypress 09 Sedona®  
 10 Morado® 11 Redland Rose® 12 Silver Oak®  
 13 Rustic Bark 14 Mahogany 15 Acacia®  
 16 Walnut Grove 17 Dark Hickory 18 Kona®



LIGHT AND MID-TONE BROWNS

Predictable and welcoming, these wood influenced hues can support a wide range of color accents. These browns can be luxurious like latte and chocolate as well as wholesome and versatile. They convey a feeling of calm and comfort in a palette that is familiar to nature.



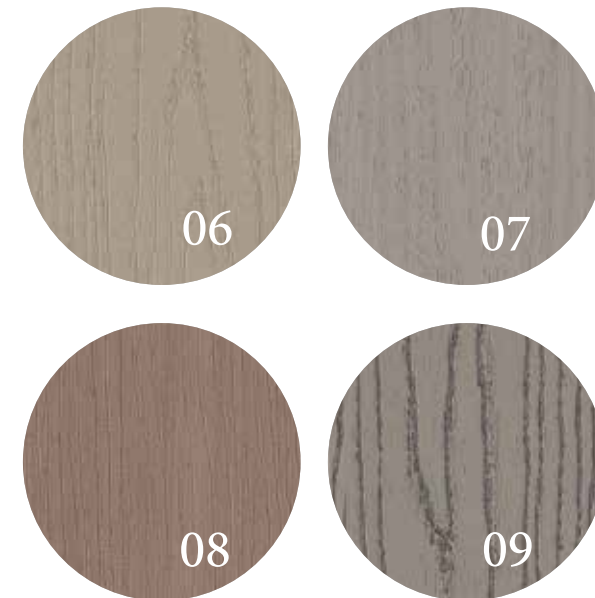
DARK BROWNS

Rustic and refined, these earthy colors provide warmth and reliability in both traditional and contemporary designs. These browns can be the foundation for various color schemes and complement metal finishes well. Quietly confident, they provide a rich background for gathering and socializing.



BEIGE AND REDS

Beige - These neutrals are calm and relaxing and are the most popular in today's homes. This color family easily coordinates with a wide variety of other hues and materials. Newer interpretations are more saturated and provide more contrast. Reds - A historically based traditional Americana color family that reflects friendliness. These warm, mineral based colors pair well with pastels and vivid accents as well as established traditional tones.



GRAYS

Sophisticated and earthy, gray can tone down or intensify the impact of surrounding colors. These shades create a palette that can homogenize or contrast color, texture and pattern. These stone and weathered wood influenced colors make a beautifully subtle statement.

# WHAT IS YOUR STYLE?



Let us help you create the perfect look for your outdoor space. Whether your style is more traditional, or you have a love for the beach, we can help you choose the products that best match the style you are trying to achieve. For more detailed information, visit [AZEK.com/Style](http://AZEK.com/Style)

## 01 TRADITIONAL

Traditional is a classic style updated to maintain relevance today. It uses materials like wicker, wood (mostly teak), wrought iron and powder coated aluminum metal finishes. Patterns include representational florals and botanicals, stripes and solids in traditional colors. Updated Traditional mixes antiques and reproductions with more contemporary elements in a diverse color palette and pattern mix. This mix helps create a livelier, more contemporary design statement.

## 02 CASUAL CONTEMPORARY

Casual Contemporary uses reclaimed and repurposed materials such as wood, brick, and old furniture to make a statement. When used, woodgrain has fine lines and subtle knots. These rustic materials are mixed with plastics, aluminum and other low luster metals for a contrast that adds character. The textiles used with this style are typically made from natural looking materials and patterns. Accessories are made from high performance materials like ceramic and concrete and sometimes offer a punch of color.

## 03 AMERICANA

The Americana style uses rustic finishes that are complex with more color and textures revealed. Natural materials are used with simple shaker style shapes and freshly painted finishes on rough backgrounds. Prints and patterns include a mix of small and large prints like florals and stripes. Extra character is gained by using complex turned spindles furniture legs and architectural trim details. Americana also uses traditional colors like ocher, sienna and burnt umber mixed with new accents of brighter blues and greens.

## 04 ECLECTIC

The Eclectic style mixes scale, colors, patterns, and finishes to create a look that is uniquely you. Furniture and accessories do not match, instead they are a mix of reclaimed, refurbished and repurposed materials in both bold bright colors and soft vintage hues. Aged, pitted and rusted metal finishes are mixed with updated satin nickel and oil rubbed bronze. The addition of whimsical and unique accent pieces are very common and used to make a statement about personal expression.

## 05 COASTAL

Coastal uses wicker, rattan and worn weathered wood in both natural and whitewashed finishes. Accents include found objects like beach glass, rocks and wood. Patterns and motifs are traditional and include stripes, checks, and nautical icons like fish, shells, coral, and rope. Colors include ocean blues, navy, lake greens, gray and white.



# HOW TO GET THIS LOOK USING AZEK PRODUCTS

## TRADITIONAL



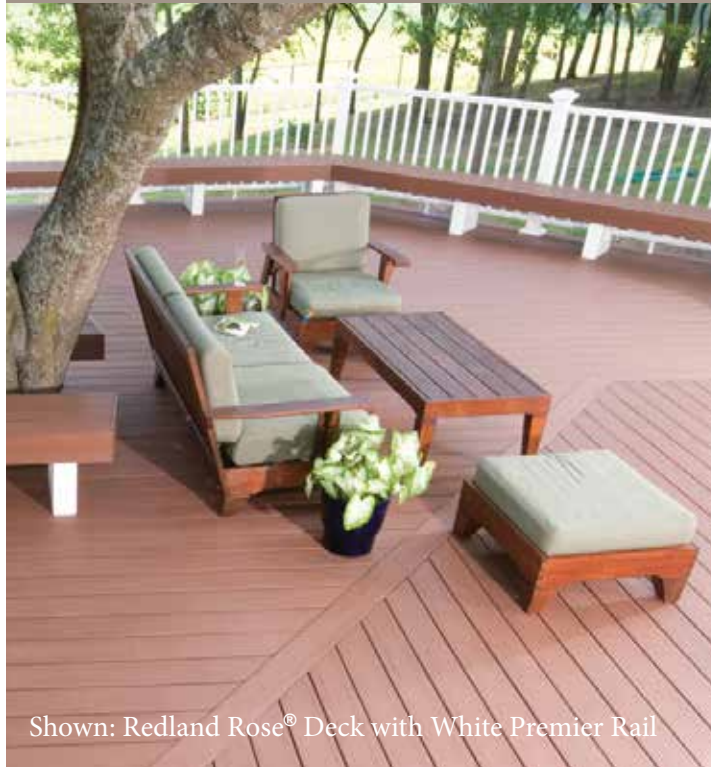
Deck	<b>Suggested Primary Decking Color</b> Vintage - Mahogany Arbor - Acacia® Arbor - Silver Oak®	<b>Suggested Accent Decking Color</b> Vintage - Cypress Arbor - Morado® Harvest - Slate Gray
Pavers	Redwood and Boardwalk used in the Herringbone or Basketweave pattern	
Rail	AZEK Premier Rail in Kona® with White Post Sleeves and White Composite Balusters. Also, AZEK Premier Rail in Slate Gray with Slate Gray Post Sleeves and Round Aluminum Balusters in black.	
Other	Use Accent Lights in architectural bronze, especially around stairs or sitting areas. Use Riser Lights on every other riser. And, if more lighting is desired, you can add the matching Lighted Island Cap to each post.	

## CASUAL CONTEMPORARY



Deck	<b>Suggested Primary Decking Color</b> Arbor - Silver Oak® Arbor - Hazelwood™ Vintage - Dark Hickory	<b>Suggested Accent Decking Color</b> Arbor - Acacia® Arbor - Morado®
Pavers	Waterwheel, Boardwalk or Olive used in the Running Bond pattern	
Rail	AZEK Premier Rail in Black with Black Post Sleeves and Cable infill. Also, AZEK Premier Rail in Black with Black Post Sleeves and Glass infill.	
Other	Use In-Deck lights on the perimeter of the deck or along walkways for a unique look.	

## AMERICANA



Shown: Redland Rose® Deck with White Premier Rail

<b>Deck</b>	<b>Suggested Primary Decking Color</b> Vintage - Mahogany Vintage - Cypress Arbor - Redland Rose®	<b>Suggested Accent Decking Color</b> Vintage - Dark Hickory Vintage - Mahogany
<b>Pavers</b>	Redwood, Boardwalk, and Olive in Plain Weave pattern	
<b>Rail</b>	AZEK Premier Rail in Black with Black Post Sleeves and Black Composite Balusters. Also, AZEK Premier Rail in White with White Composite Balusters.	
<b>Other</b>	Add a Bench and Planter Kit with Bronze hardware for added seating. Use a complementary deck color and add Under-Rail Lighting to create a soft light for a casual seating area.	

## COASTAL



Shown: Brownstone® Deck with White Premier Rail

<b>Deck</b>	<b>Suggested Primary Decking Colors</b> Arbor - Hazelwood™ Vintage - Dark Hickory Harvest - Brownstone®	<b>Suggested Accent Decking Color</b> Terra - Tahoe® Arbor - Slate Gray Harvest - Brownstone®
<b>Pavers</b>	Waterwheel in Herringbone or Running Bond pattern	
<b>Rail</b>	AZEK Trademark Rail in White with White Post Sleeves and White Composite Balusters or Glass infill. Also, AZEK Trademark Rail in White with White Post Sleeves and Cable. For larger spaces, AZEK Reserve Rail in White with White Post Sleeves and Glass infill.	
<b>Other</b>	Add an In-Deck Storage Kit to keep your furniture cushions and accessories out of the sea water filled air.	

## ECLECTIC



Shown: Dark Hickory Deck with Slate Gray Premier Rail and Black Composite Balusters

<b>Deck</b>	<b>Suggested Primary Decking Color</b> Vintage - Dark Hickory Terra - Sedona®	<b>Suggested Accent Decking Color</b> Vintage - Mahogany Harvest - Kona®
<b>Pavers</b>	Any Paver color in Block Lattice or Soldiered pattern	
<b>Rail</b>	AZEK Premier Rail in Black with Black Post Sleeves and Glass Infill. Also, Premier Rail in Slate Gray with Slate Gray Post Sleeves and Black Composite Balusters or Cable.	
<b>Other</b>	Use AZEK Trim to create a pergola or arbor to provide added shade and decorating options. Weave fabric with a bold pattern through the pergola and hang lighting for a unique personal touch.	

# INSPIRING SPACES

Find Your Inspiration Today! Visit: [AZEK.com/photogallery](http://AZEK.com/photogallery)



**SMALL SPACES** - In order to not take up valuable seating space on the deck, a unique grill space is created using easy-to-install AZEK Pavers on the ground level. In addition, a great outdoor retreat for the family dog is made easy with the use of an AZEK Gate. Shown: AZEK Deck in Silver Oak, AZEK Trademark Rail with Composite Balusters, Standard AZEK Pavers in Waterwheel.



**OUTDOOR "ROOMS"** - This expansive deck, with three separate levels, creates a space that has outdoor "rooms". Shown here is a space to relax, eat, and grill. Create additional room definition by using contrasting board colors or patterns around the perimeter of each section as shown. Shown: AZEK Deck in Brownstone with Sedona accents and AZEK Lighting (page 42).



**SUN SHADE & PRIVACY** - Create additional privacy or block the afternoon sun with a fascia wall supported by tall posts and supporting framework. Add lighting to the top of each post to create a space perfect for relaxing. Shown: AZEK XLM in Harvest Bronze.



**DEFINING BENCHES** - Decks near ground level can be defined with benches, providing great built-in seating. The planter boxes construct an exciting way to show off annual flowers, making the space inviting and one with the natural surroundings. Shown: AZEK Deck in Tahoe with Bench and Planter Kit using Tahoe and Redland Rose with Architectural Bronze hardware.

\* Please refer to local building codes prior to installation



# COLLECTION DIFFERENCES

AZEK Deck offers 6 collections that vary based on a variety of grain textures and color variegations. These collections all offer the superior quality you expect from AZEK Capped PVC Deck, and give you the variety of aesthetic options you want to create your own personal masterpiece.

## VINTAGE COLLECTION - RUSTIC SOPHISTICATION

- Dramatic color streaking
- Unique embossing with fine linear texture lines

## XLM® TROPICAL COLLECTION - TROPICAL HARDWOODS

- Pronounced Color Streaking
- Distinct Grain Pattern

## ARBOR COLLECTION® - EXOTIC HARDWOODS

- Subtle color streaking
- Embossing texture with wider linear grain pattern

## TERRA COLLECTION - DRAMATIC EARTH TONES

- No color streaking
- Highlighted graining texture
- Grain pattern that has peaks similar to those found in real wood

## HARVEST COLLECTION® & XLM® NATURAL COLLECTION - CLASSIC & TRADITIONAL

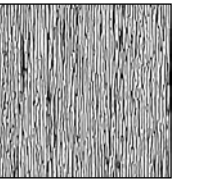
- No color streaking
- Subtle grain pattern

All AZEK Deck collections are Made in the USA

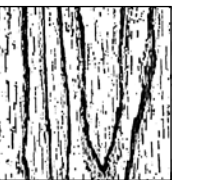
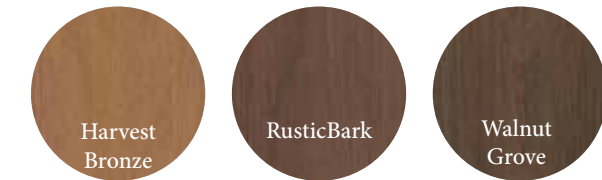
VARIEGATED  
COLOR

GRAIN  
PATTERN

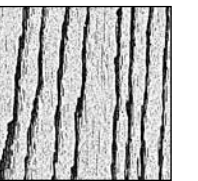
## VINTAGE COLLECTION RUSTIC SOPHISTICATION



## XLM® TROPICAL COLLECTION TROPICAL HARDWOODS



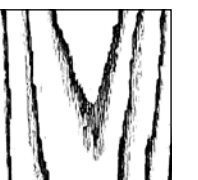
## ARBOR COLLECTION® EXOTIC HARDWOODS



## TERRA COLLECTION DRAMATIC EARTH TONES



## HARVEST COLLECTION® XLM® NATURAL COLLECTION CLASSIC & TRADITIONAL



SOLID  
COLOR

2015  
NEW  
PRODUCT

# VINTAGE COLLECTION

AZEK Deck's Vintage Collection is designed for homeowners who want:

- The latest technology and breakthrough aesthetics with a realistic wood appearance
- Rustic texture found traditionally in reclaimed wood and indoor flooring
- Rich colors with dramatic streaking that truly emulate tropical hardwoods
- Exclusive embossing pattern with fine texture lines
- Slight board-to-board color variation simulating hardwoods
- Enhanced colorfastness
- Hidden fastening options available with CONCEALoc® and CORTEX® (page 41)
- Unique color variations within each board of the Vintage Collection are designed to emulate the natural aesthetics of exotic hardwoods



01 Mahogany 02 Dark Hickory 03 Cypress

Board Dimensions are 1" x 5 1/2"

All Vintage Collection colors are available in Grooved Profiles and Square Shouldered Profiles

Grooved Profiles, used for hidden fastening, are available in 12', 16' and 20' lengths

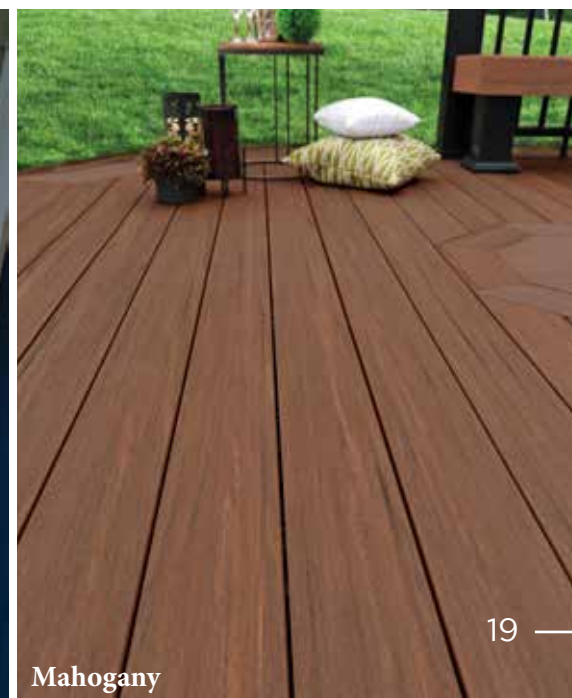
Square Shouldered Profiles are available in 16' and 20' lengths



Dark Hickory



Cypress



Mahogany

# ARBOR COLLECTION<sup>®</sup>

AZEK Deck's Arbor Collection is designed for homeowners who want:

- Warm, vibrant wood tones with natural color variations
- Subtle streaking to mimic exotic wood
- Embossing texture with wider linear grain pattern
- Slight board-to-board color variation
- Unique color variations within each board of the Arbor Collection are designed to emulate the natural aesthetics of exotic hardwoods



01 Hazelwood™ 02 Silver Oak® 03 Morado® 04 Redland Rose® 05 Acacia®

Board Dimensions are 1" x 5 1/2"

All Arbor Collection colors are available in Square Shouldered Profiles

Square Shouldered Profiles are available in 12', 16' and 20' lengths for Silver Oak, Morado, Acacia and Redland Rose

Hazelwood is available in a 16' and 20' square profile lengths as well as 12', 16', and 20' Grooved Profile lengths

Grooved Profiles, use CONCEALoc<sup>®</sup> hidden fastening



Hazelwood™



Morado®



Silver Oak®

# XLM<sup>®</sup> TROPICAL COLLECTION

AZEK Deck's XLM<sup>®</sup> Tropical Collection is designed for homeowners who want:

- Pronounced color streaking and bold color selection
- Distinct embossing pattern
- Hidden fastening options available with CONCEALoc<sup>®</sup> and CORTEX<sup>®</sup>
- Unique color variations within each board of the XLM Tropical Collection are designed to emulate the natural aesthetics of exotic hardwoods.



01 Harvest Bronze 02 RusticBark 03 Walnut Grove

Board Dimensions are 1" x 5 1/2"

All XLM Tropical Collection colors are available in Grooved Profiles and Square Shouldered Profiles

Grooved Profiles, used for hidden fastening, are available in 12', 16' and 20' lengths

Square Shouldered Profiles are available in 20' lengths



Harvest Bronze with Walnut Grove Accents



RusticBark



Walnut Grove

# TERRA COLLECTION

AZEK Deck's Terra Collection is designed for homeowners who want:

- Rich earth tones of two of the most popular shades
- Graining pattern that has peaks similar to those found in real wood
- Enhanced graining texture highlighted to provide a more dramatic look
- Solid color tones provide more consistent board-to-board color



01 Sedona® 02 Tahoe®

Board Dimensions are 1" x 5 1/2"

All Terra Collection colors are available in Square Shouldered Profiles

Square Shouldered Profiles are available in 12', 16' and 20' lengths

*Sedona and Tahoe Fascia are manufactured without grain highlights in order to better complement all AZEK Deck colors.*

*The deck applications depicted in this brochure are for display purposes only and not for the purpose of validating the suitability, warrantability or safety of any particular installation or application of the product. Always consult AZEK's Installation Instructions as well as local building codes to ensure proper installation.*



Tahoe® with Redland Rose® Accents



Sedona® with Kona® Accents



Tahoe® with Kona® Premier Rail and Composite Balusters

# HARVEST® & XLM® NATURAL COLLECTIONS

AZEK Deck's Harvest Collection is designed for homeowners who want:

- Calming earth tones in the most popular shades
- Wood-like peaked graining texture
- Consistent board-to-board color
- Hidden fastening options available with CONCEALoc® and CORTEX®



Board Dimensions are 1" x 5 1/2"

All Harvest Collection colors are available in Square Shouldered Profiles

Square Shouldered Profiles are available in 12', 16' and 20' lengths

Brownstone and Slate Gray are available in Grooved Profiles, used for hidden fastening, in 12', 16' and 20' lengths

AZEK Deck's XLM® Natural Collection is designed for homeowners that want:

- Cool color palette
- Consistent board-to-board color
- Subtle graining pattern
- Hidden fastening options available with CONCEALoc® and CORTEX®

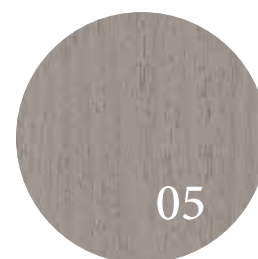
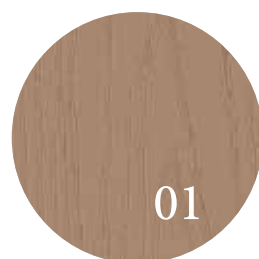


Board Dimensions are 1" x 5 1/2"

All XLM Natural Collection colors are available in Grooved Profiles and Square Shouldered Profiles

Square Shouldered Profiles are available in 20' lengths

Grooved Profiles, used for hidden fastening, are available in 12', 16' and 20' lengths



Harvest Collection - 01 Brownstone 02 Slate Gray 03 Kona®  
XLM Natural Collection - 04 SandRidge 05 RiverRock



Brownstone with Sedona® Accents



Kona®



RiverRock

# AZEK PORCH

AZEK Porch is designed for homeowners who want:

- A more traditional porch look with a narrower board profile
- Hidden fastening installation offered with a tongue and groove system
- A limited lifetime warranty from the leader in Capped PVC Deck
- Five charming color options that look great with any housing exterior

01 Brownstone 02 Slate Gray 03 Morado® 04 Silver Oak® 05 Oyster®



All AZEK Porch boards are tongue & groove and measure 1" x 3 1/8"  
Brownstone and Slate Gray are available in 10', 12' and 16' lengths  
Morado, Silver Oak and Oyster are available in 12' and 16' lengths



AZEK Porch is Made in the USA.



Morado® with Kona® Deck Accents



Slate Gray

Brownstone

# AZEK PAVERS

AZEK Pavers are designed for homeowners who want:

- Versatility and custom design options with five stone like colors
- An environmentally responsible product made of up to 95% recycled rubber and plastic
- A paver that is scratch, stain and impact resistant
- A solution that helps manage water drainage with a permeable paver product
- An easy to install do-it-yourself product using our patented grid system over an existing patio

01 Redwood 02 Boardwalk 03 Olive 04 Village 05 Waterwheel



AZEK Pavers are Made in the USA.

For more information, download the complete AZEK Paver catalog at [AZEK.com/Catalog](http://AZEK.com/Catalog)



Resurfacing Pavers (rooftop application) in Redwood, Boardwalk, Village and Waterwheel



Resurfacing Pavers in Boardwalk, Olive and Waterwheel

Standard Pavers in Redwood and Boardwalk



# COMPARE BY PRICE

HIGHER PRICED

LOWER PRICED

Harvest Bronze, Cypress, Mahogany, Morado, Hazelwood™, Redland Rose, Sedona, RusticBark, Walnut Grove, Dark Hickory, Acacia, Silver Oak, Kona, Tahoe, Slate Gray, RiverRock

LIGHT & MEDIUM BROWNS    BEIGE & REDS    DARK BROWNS    GRAYS

All AZEK Deck colors are made from the highest quality raw materials. Differences in aesthetics, grain pattern, material technology and the manufacturing process drive the multiple price points. These differences are required to achieve the desired look in all the AZEK Deck Collections.

## RAILING PROFILES

## BALUSTERS, CABLE & GLASS

HIGHER PRICED

LOWER PRICED

Reserve Rail, Premier Rail (colors), Premier Rail (white), Trademark Rail, CableRail by Feeney®, Glass Kit (glass not included), Composite Balusters, Aluminum Balusters

Priced in the same range as Premier Rail in White

Color and architectural scale are two primary factors contributing to the multiple price points of AZEK Rail. AZEK Reserve Rail has the largest profile and works well in larger scale spaces. Material technology, the manufacturing process and the size of the rail profiles all contribute to the multiple price-points of AZEK Rail.

# AZEK RAIL PREMIER

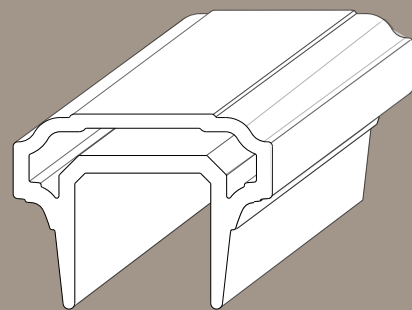
AZEK Rail combines the solid look and feel of wood with the durability and low maintenance of AZEK Building Products. AZEK Premier Rail, a classic Victorian profile, is available in five colors and offers you the ability to customize with five unique infill options: composite balusters, round aluminum balusters, square aluminum balusters, cable and glass kit.

CHOOSE YOUR RAIL STYLE

CHOOSE YOUR COLORS

CHOOSE YOUR BALUSTERS, CABLE OR GLASS

CHOOSE YOUR LIGHTING

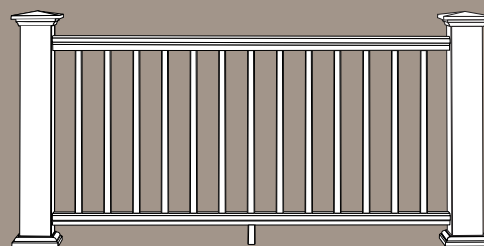


- Looks and feels like real wood
- No painting or staining required
- Will not rot, peel, or splinter\*
- Hidden fastening
- Engineered for improved safety and strength
- Code compliant (ESR-1481 and CCRR-0165)

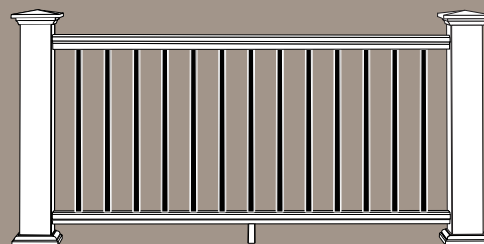
All Premier Rail colors available in 6' and 8' lengths. 10' sections available in white and black only

\*For complete warranty information visit [AZEK.com/warranty](http://AZEK.com/warranty)

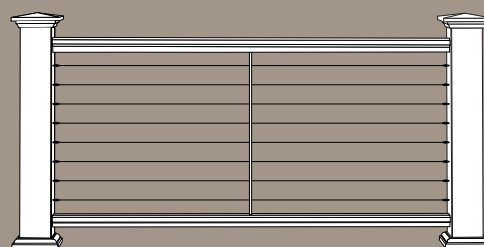
Composite Balusters



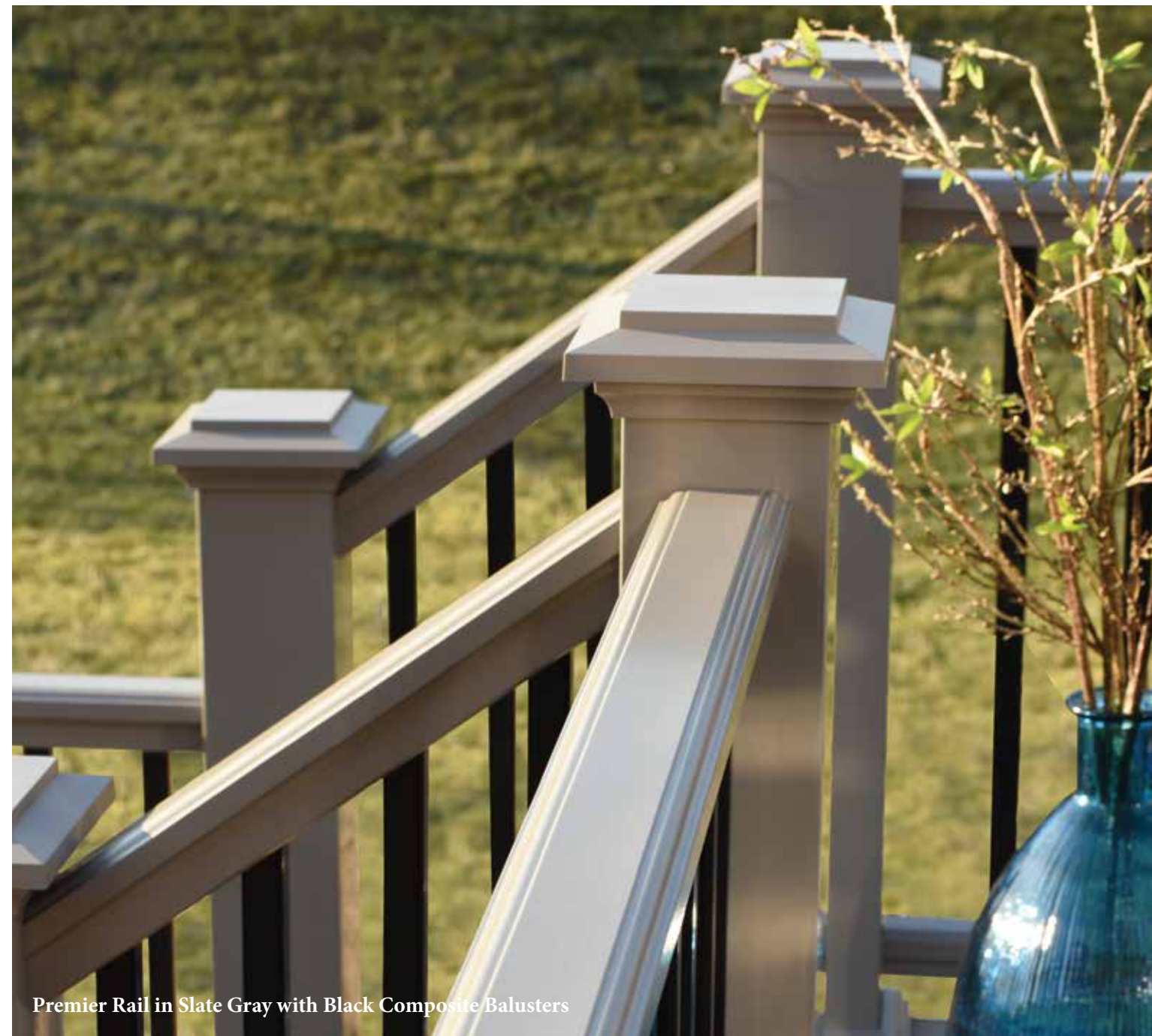
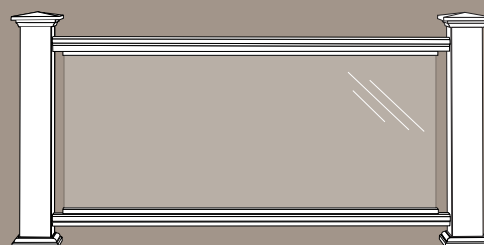
Aluminum Balusters (round & square)



CableRail by Feeney®

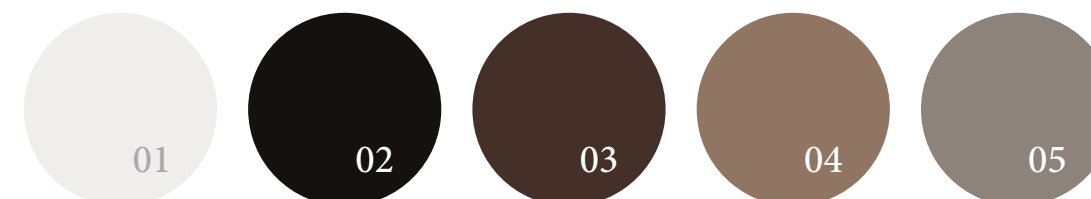


Glass Kit (glass not included)



Premier Rail in Slate Gray with Black Composite Balusters

## AZEK PREMIER RAIL COLORS



01 White 02 Black 03 Kona® 04 Brownstone 05 Slate Gray

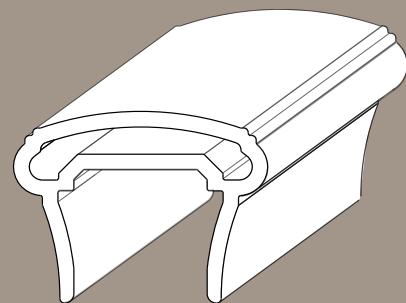
# AZEK RAIL TRADEMARK

*AZEK Trademark Rail, a Colonial profile, is available in white and offers you the ability to customize with five unique infill options: composite balusters, round aluminum balusters, square aluminum balusters, cable and glass kit.*

CHOOSE YOUR RAIL STYLE

CHOOSE YOUR BALUSTERS, CABLE OR GLASS

CHOOSE YOUR LIGHTING



*Looks and feels like real wood*

*No painting or staining required*

*Will not rot, peel, or splinter\**

*Hidden fastening*

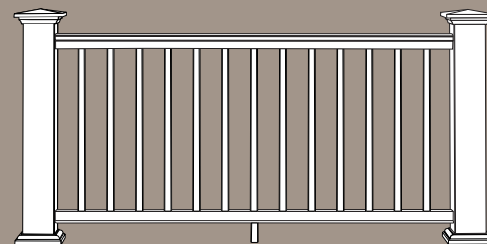
*Engineered for improved safety and strength*

*Code compliant (ESR-1481 and CCRR-0165)*

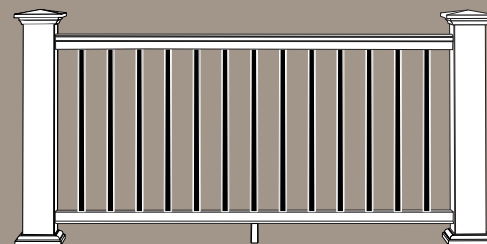
*Trademark Rail is available in 6', 8' and 10' lengths*

*\*For complete warranty information visit [AZEK.com/warranty](http://AZEK.com/warranty)*

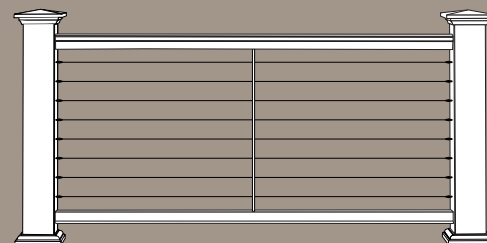
*Composite Balusters*



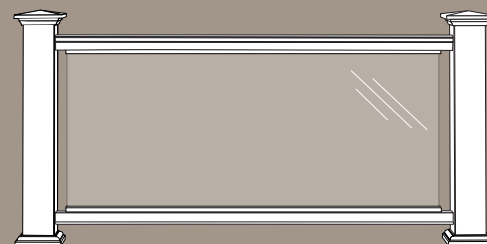
*Aluminum Balusters (round & square)*



*CableRail by Feeney®*



*Glass Kit (glass not included)*



Trademark Rail in White with White Composite Balusters

## AZEK TRADEMARK RAIL COLOR



01 White

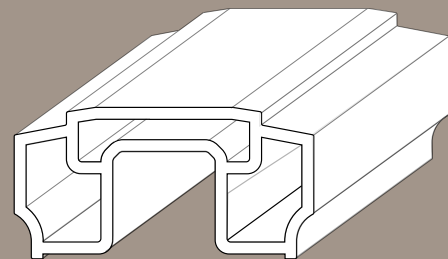
# AZEK RAIL RESERVE

AZEK Reserve Rail offers a larger architectural profile and works well in larger scale spaces and is great for porches. It is available in white, and offers you the ability to customize with five unique infill options: composite balusters, round aluminum balusters, square aluminum balusters, cable and glass kit.

CHOOSE YOUR RAIL STYLE

CHOOSE YOUR BALUSTERS, CABLE OR GLASS

CHOOSE YOUR LIGHTING



Looks and feels like real wood

No painting or staining required

Will not rot, peel, or splinter\*

Hidden fastening

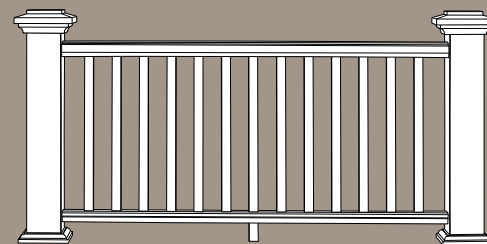
Engineered for improved safety and strength

Code compliant (ESR-1481 and CCRR-0165)

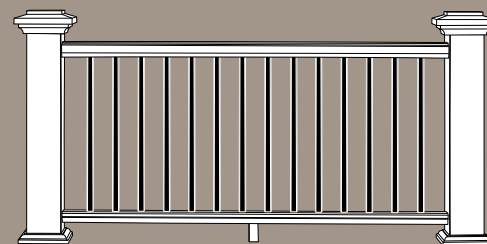
Reserve Rail is available in 6', 8' and 10' lengths

\*For complete warranty information visit [AZEK.com/warranty](http://AZEK.com/warranty)

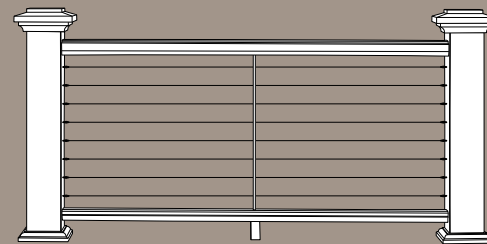
Composite Balusters



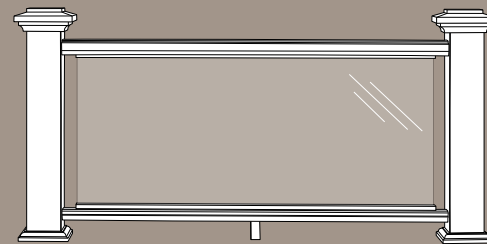
Aluminum Balusters (round & square)



CableRail by Feeney®



Glass Kit (glass not included)



Reserve Rail in White with White Composite Balusters

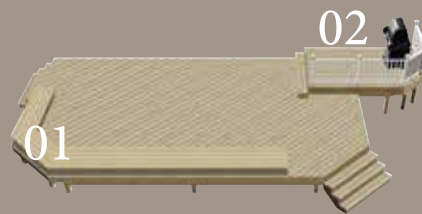
## AZEK RESERVE RAIL COLOR



01 White

# OTHER THINGS TO CONSIDER

*It is important in the design and planning phase to think about how you are going to use your deck once it is built. Will you need an eating area? Will your deck need stairs or a gate? What type of fastening do you prefer? AZEK Deck makes it easy to design a space that is right for you.*

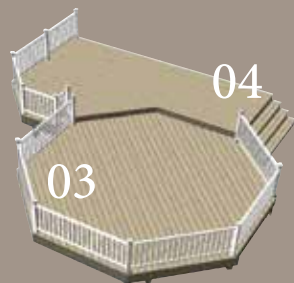


## 01 Seating

Built-in benches are a great way to add additional seating and can be used as an alternative to railing where building codes permit. Check out the AZEK Bench and Planter Kit (pg 44).

## 02 Grilling

If you frequently grill on your deck, consider adding a dedicated area for grilling that is easy to access from the home.



## 03 Dining

Creating an area suited for an outdoor dining set can provide not only a comfortable eating experience but also a great space for entertaining with neighbors, or just relaxing on a clear summer evening.

## 04 Multiple Levels

Designing a deck with multiple levels can separate your lounging space from your dining space and can create distinct outdoor rooms specific to your lifestyle.



## 05 Stairs

Does your deck need stairs? Well placed stairs will make all the difference in providing easy access to a garage, walkway or yard.

\*Download these three deck plans and more at [AZEK.com/deckplans](http://AZEK.com/deckplans)

# HIDDEN FASTENING

*Hidden fastening can be the perfect finishing touch that adds a polished feel to your deck masterpiece. AZEK Deck offers a variety of hidden fastening options that fit with a variety of designs and budgets.*



## 01 CONCEALoc®

CONCEALoc is designed for the deck surface, except for perimeter boards and stairs, exclusively for AZEK (and TimberTech®) grooved boards. CONCEALoc gives you consistent 3/16" gapping and comes with a 25-year limited warranty. To make it even easier, CONCEALoc can be installed pneumatically using a TigerClaw® gun.



## 02 CORTEX®

CORTEX is great for perimeter and stair boards and provides a completely fastener free look when used with CONCEALoc on the deck surface boards. CORTEX offers a perfect color match for all AZEK XLM® products.

For more information on all of the recommended fastening options for AZEK Deck, visit [AZEK.com/fasteningguide](http://AZEK.com/fasteningguide)

THE PERFECT ACCENT

# AZEK LIGHTING

Once you've chosen your AZEK Rail, enhance it with AZEK Lighting, and enjoy your deck into the evening hours. From Post Cap Lights to In-Deck Lights, AZEK offers a variety of lighting solutions to meet the specific needs of your outdoor project.

01 Lighted Island Cap 02 Under-Rail Light 03 Post Cap Light  
04 Accent Light 05 In-Deck Light 06 Riser Light

Lighted Island Cap measures 5.5" x 5.5" and is available in White, Black, Kona®, Brownstone and Slate Gray

Post Cap Light measures 5.5" x 5.5"

Accent Light is available in White and Architectural Bronze

In-Deck Light is available in Architectural Bronze

Riser Light is available in Architectural Bronze



# FINISHING TOUCHES

Enhance your space with one or more of AZEK's unique finishing touches. Our Bench and Planter Kit has a beautifully integrated adjustable bench and can be configured with a flower box at each end. You can choose a color to match your AZEK Deck or AZEK Porch or one that complements your space and style. Choose from two hardware finishes: Titanium or Bronze.

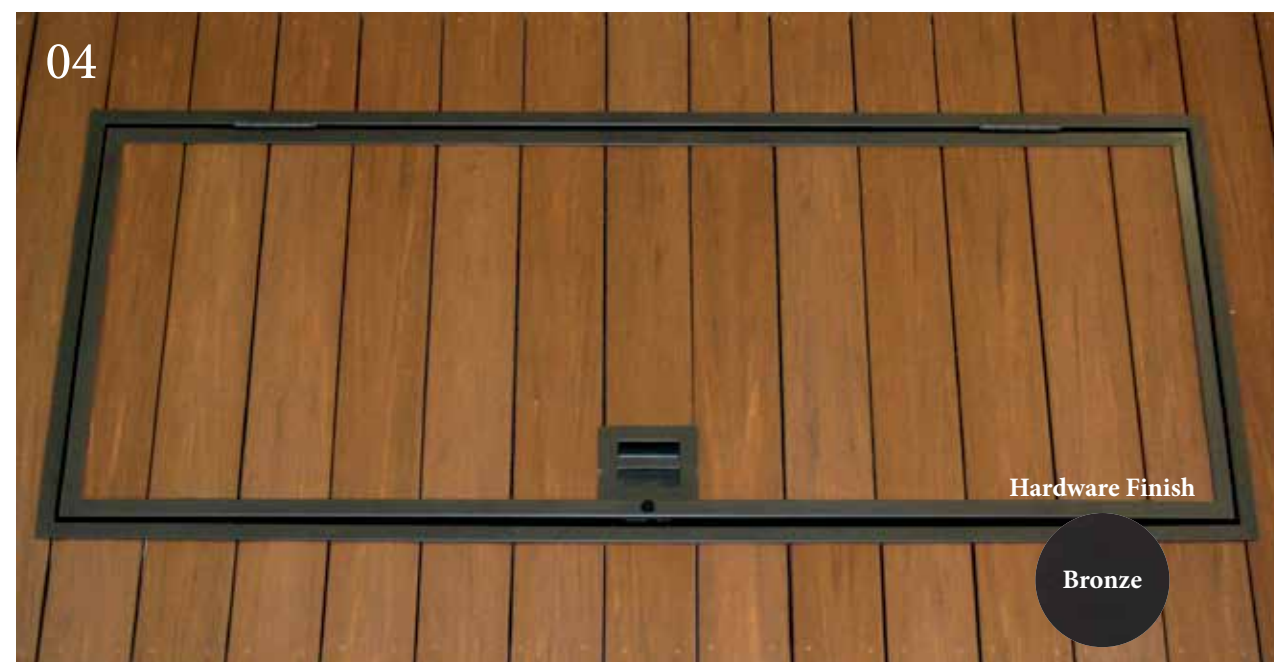
Our ADA Handrail and Gate Kit accessories are also great additions to your AZEK Rail. ADA Handrail can be used with any of the AZEK Rail profiles, and our Gate Kits can be used with both AZEK Premier Rail and AZEK Trademark Rail. Both accessories are available in white and black.

Are you tired of trying to find a place to store cushions, umbrellas or other deck items? The AZEK In-Deck Storage Kit is the perfect place to store your outdoor items without losing valuable deck space. Measuring just over 6 ft. long with 17.5 cubic feet of storage space, the AZEK In-Deck Storage Kit is the perfect solution.

The Secure-Mount Post is designed to allow AZEK Rail posts to be installed directly onto a deck or porch surface without the use of a 4x4 treated post.

- 01 Bench & Planter Kit
- 02 ADA Handrail
- 03 Gate Kit
- 04 In-Deck Storage Kit
- 05 Secure-Mount Post & Deck Mounting Kit

Gate products are not ADA compliant or appropriate for weight bearing applications.



# MORE RESOURCES...

*AZEK Building Products makes it easy to research, design and build your perfect outdoor oasis. We offer a variety of tools and resources to help you through the process. For more information on these great tools, visit [AZEK.com](http://AZEK.com).*

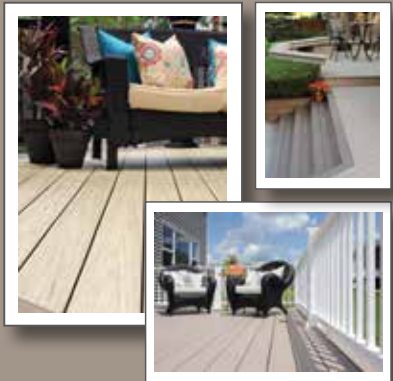
## iPad® APP



It's time to turn the dreams of any home and outdoor living space into reality with the AZEK Building Products iPad® App. From inspired trim and moulding applications, deck and railing designs, porch colors, and paver layouts, the AZEK App puts the power of creativity in your hands. Mix and match products, designs, and colors. Create a home design that anyone would truly be proud to call their own. And then, step from the world of flat, 2-dimensional visualization into the future using visionary, 3D technology to, literally, make the AZEK House come to life. Remember to always consult your local building codes.

For more details, visit [AZEK.com/iPad](http://AZEK.com/iPad).

## PHOTO GALLERY



Need ideas, inspiration, or just want to browse what others have done? AZEK.com offers a robust photo gallery filled with everything you'll need to imagine your perfect outdoor living area. Browse photos of Decks, Railing, Trim & Moulding, Porches as well as Pavers. To find your inspiration, visit [AZEK.com/photogallery](http://AZEK.com/photogallery)

## DECK DESIGNER



Beautify your outdoor living space with a low-maintenance, custom designed AZEK deck. With our interactive deck design tool, you can choose the size, shape and color of your deck and even add levels, stairs and railings. You can create and save as many deck ideas as you'd like. When you're finished, you can print out the following:

- A 3-D image of your dream deck
- A suggested materials list
- Installation guidelines
- Helpful construction tips

Remember to always consult your local building codes. To get started, visit [AZEK.com/deckdesigner](http://AZEK.com/deckdesigner)

Interested in a sample of a particular color or collection? Visit our Catalog & Samples page and order up to five 4" samples free of charge. If you're interested in larger samples, you can visit our online store and purchase a variety of 2' samples of your choice.

To order your free samples, visit [AZEK.com/catalogs](http://AZEK.com/catalogs)

To purchase a variety of other samples, visit [AZEK.com/onlinestore](http://AZEK.com/onlinestore)

## SAMPLES



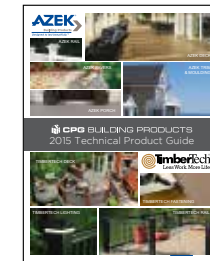
## INSTALLATION HELP



Not sure where to begin when it comes to installation? Let us help take the guesswork out of the process. We offer a library of installation guides and videos that walk you through the step-by-step process of installing AZEK Building Products. We tell you what materials and tools you will need, as well as provide tips and tricks to make the installation process easier.

To get the facts, visit [AZEK.com/technical-center/installations](http://AZEK.com/technical-center/installations)

## TECHNICAL PRODUCT GUIDE



Get technical information for all the AZEK products in the new 2015 Technical Product Guide online.

To download, visit [AZEK.com/technical-center/technicalguide](http://AZEK.com/technical-center/technicalguide)

**1-877-ASK-AZEK**  
**1 (877) 275-2935**

Have other questions? Call us at 1-877-ASK-AZEK to speak with a customer service representative today.

*Depending on environmental conditions, all AZEK Deck, AZEK Rail, AZEK Porch and AZEK Paver colors may appear to change over time as part of the natural weathering process.*





*Designed to last beautifully.™*

CPG Building Products LLC  
888 North Keyser Avenue • Scranton, PA 18504  
[www.AZEK.com](http://www.AZEK.com) • (877) ASK-AZEK  
(877) 275-2935

Thank you for considering AZEK Deck, AZEK Porch, AZEK Rail and AZEK Pavers. Before purchasing, please visit [www.AZEK.com](http://www.AZEK.com) for detailed installation and product use information.